

THE GROTESQUE

A PSYCHOLOGICAL THRILLER
WRITTEN & DIRECTED BY MICHAEL BEKEMEYER

**SUPER
MEGA
ULTRA**

FROM THE DIRECTOR...



I've always been fascinated by the alternate paths characters could have taken, those brief moments where a different choice might have led them down a completely new road. Life presents so many forks, each one holding the potential for something greater, but often characters are too caught up in their current reality to recognize these opportunities. Their focus becomes so narrow, believing that what they see is the only possibility.

What captivates me most is how characters get trapped in their own minds, clinging to falsehoods or insecurities that distort their view of the world. These self-imposed limitations prevent them from seeing brighter paths. Their perceived reality acts as a prison, blurring the options that could lead to something better if only they could break free of those mental barriers.

And now it's time to make a movie about a character with such a skewed world view, trauma, insecurities, and isolation run wild and completely unchecked for so long that he actually loses his grip on reality as the rest of us understand it. The Grotesque is about that negativity doom scroll that takes place inside our minds and if we aren't careful, we may never know reality again.

FILM SYNOPSIS

A disfigured man, who has lived a life of isolation becomes obsessed with a woman to the point where he kidnaps her and holds her hostage. As his delusions begin to take over, he keeps insisting they live together as a couple. But the longer the ruse goes on, the more she pushes back, which brings everything to a twisting, turning, bloody end.

THE GROTESQUE

**SUPER
MEGA
ULTRA**

FEVER DREAM FAIRY TALE



Owen's life shattered years ago when a car accident killed his parents and left his face gruesomely scarred. This tragedy drove him into seclusion, his scars a constant reminder of his isolation. When we first meet Owen, he's on a date, hiding his disfigurement. His date's horrified reaction—she storms out, cursing him—leaves him even more desolate.



A chance encounter with the stunning Bella at a grocery store ignites a dark obsession in Owen. Her innocent smile becomes all-consuming, leading him to follow her home. After she drinks herself to sleep, Owen sneaks in, kisses her in her slumber, and retreats. His obsession escalates when he returns to drug her and abduct her.



Confined in his guest room, Bella endures Owen's increasingly violent attempts to convince her they belong together. Her resistance crumbles as she succumbs to Stockholm Syndrome—or does she? The situation takes a horrific turn when Owen, in a fit of rage, stabs Bella with a fork, leading him to a nightmarish decision to amputate her arm to stop the infection.

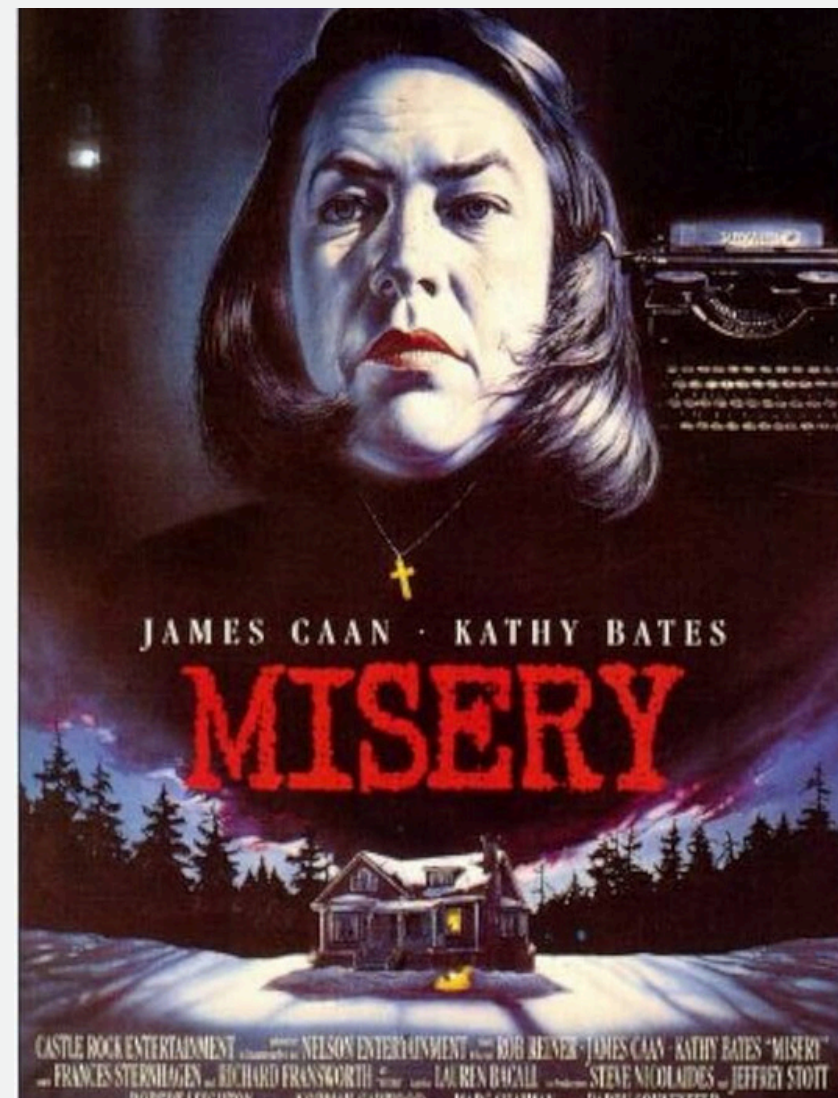
This brutal act drives Bella to silence, and Owen, wracked with guilt, faces a devastating ultimatum that shatters their relationship. As tension peaks, reality and delusion blur, leaving audiences questioning what's real and what's a product of Owen's fractured mind.

SIMILAR FILMS WE LOVE

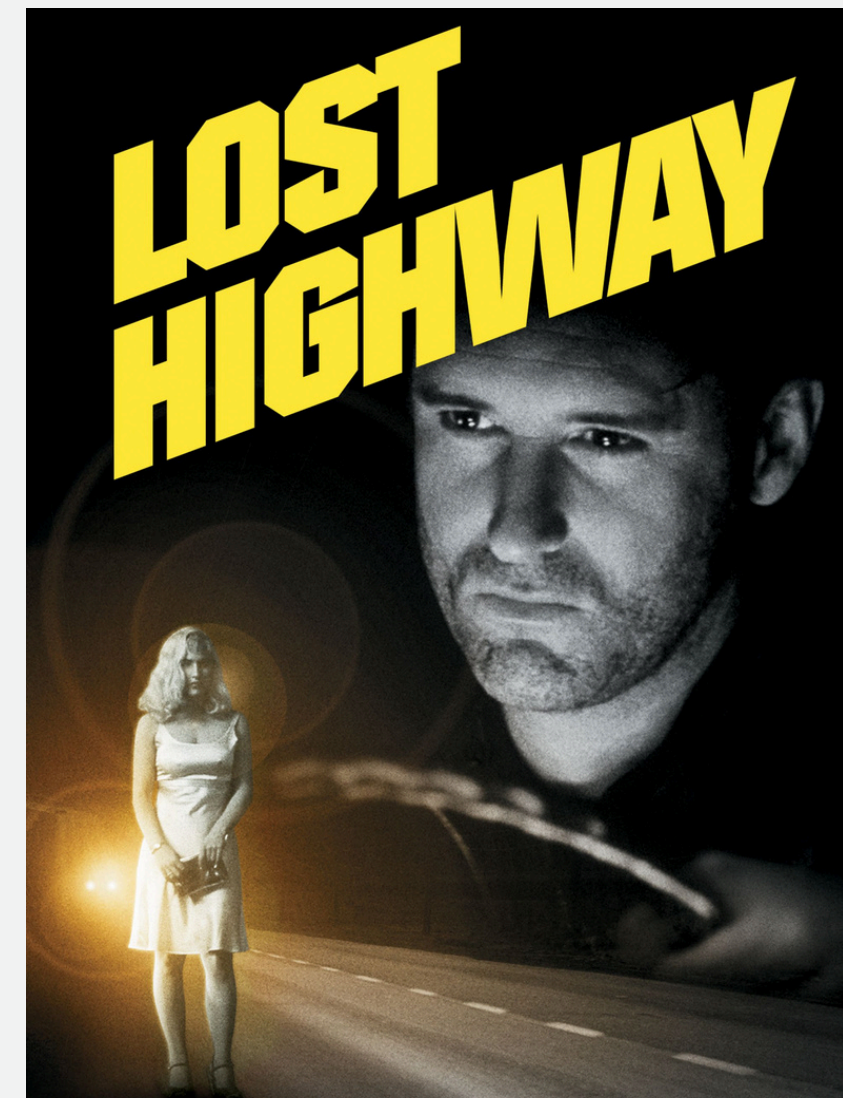
As part of our pitch, we've included a list of comparable titles in the genre to give you a sense of what we want to create.



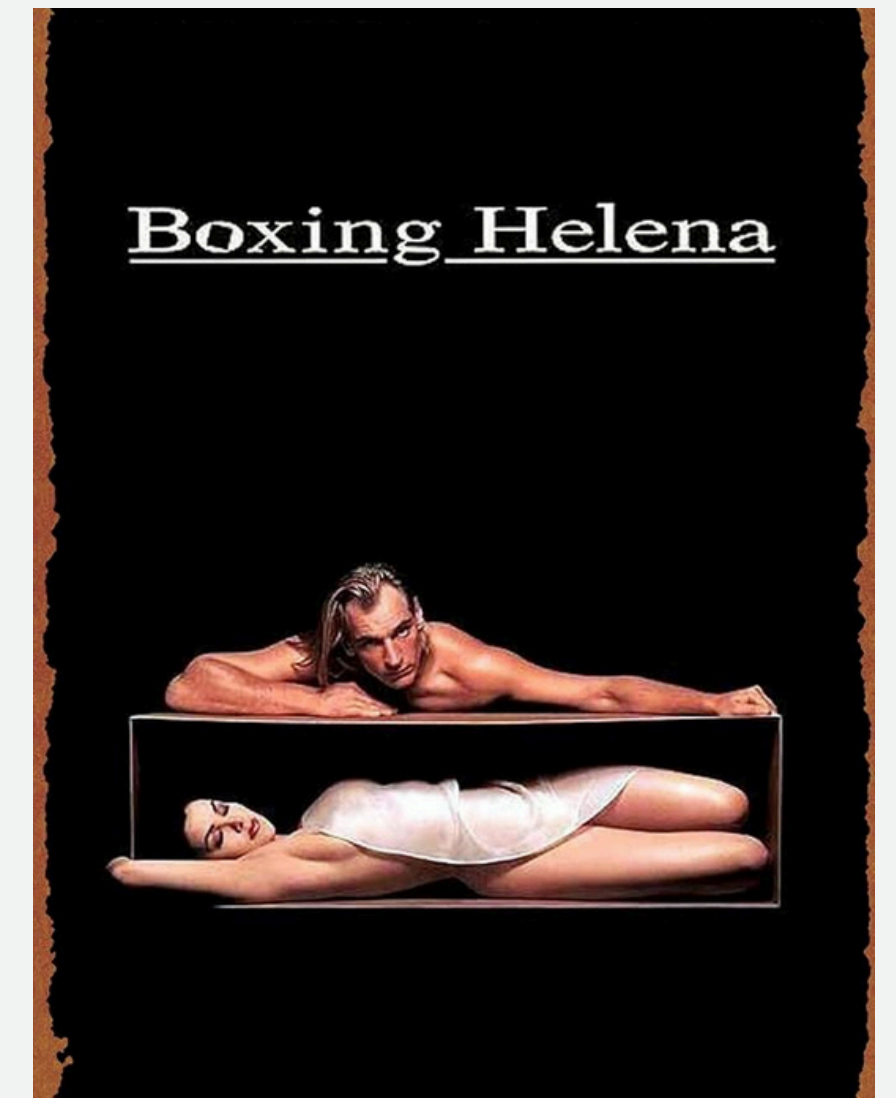
REQUIEM FOR A DREAM
2000



MISERY
1990

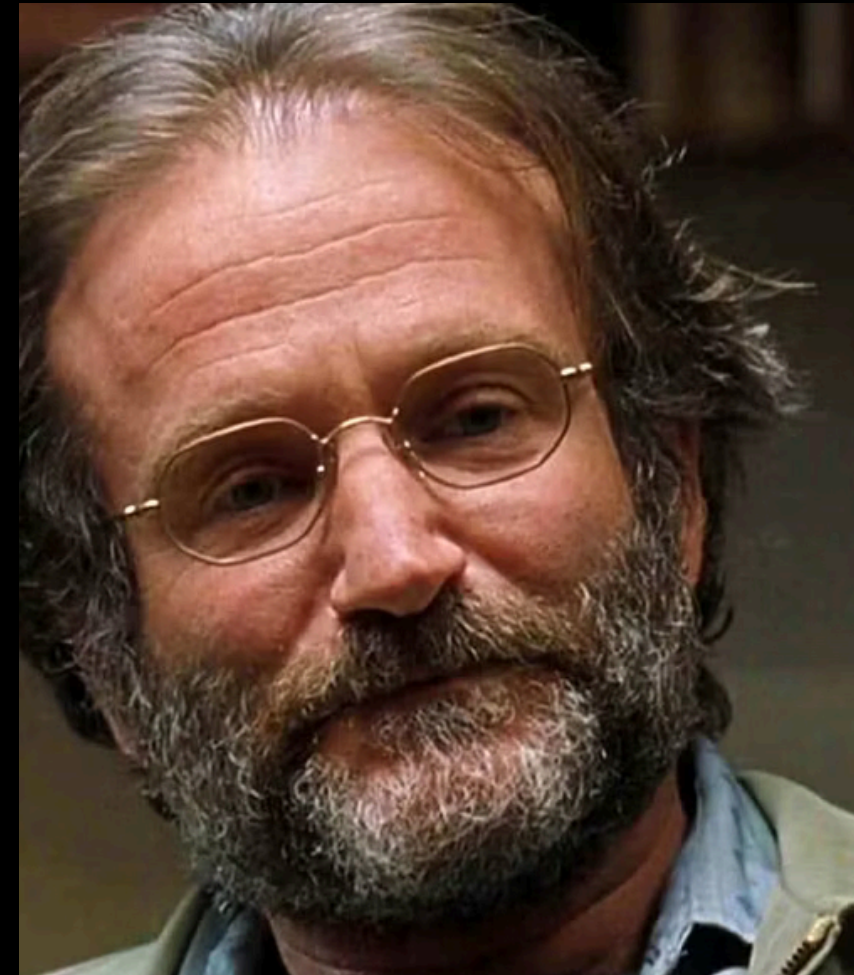


LOST HIGHWAY
1997



BOXING HELENA
1993

KEY CHARACTERS



THE GROTESQUE

SUPER
MEGA
ULTRA

OWEN

Owen is a literary grotesque, a deeply tragic and sympathetic figure. Severely scarred from a car accident in his youth, his face bears the physical trauma of his past, mirroring the psychological scars that have left him disconnected from reality.



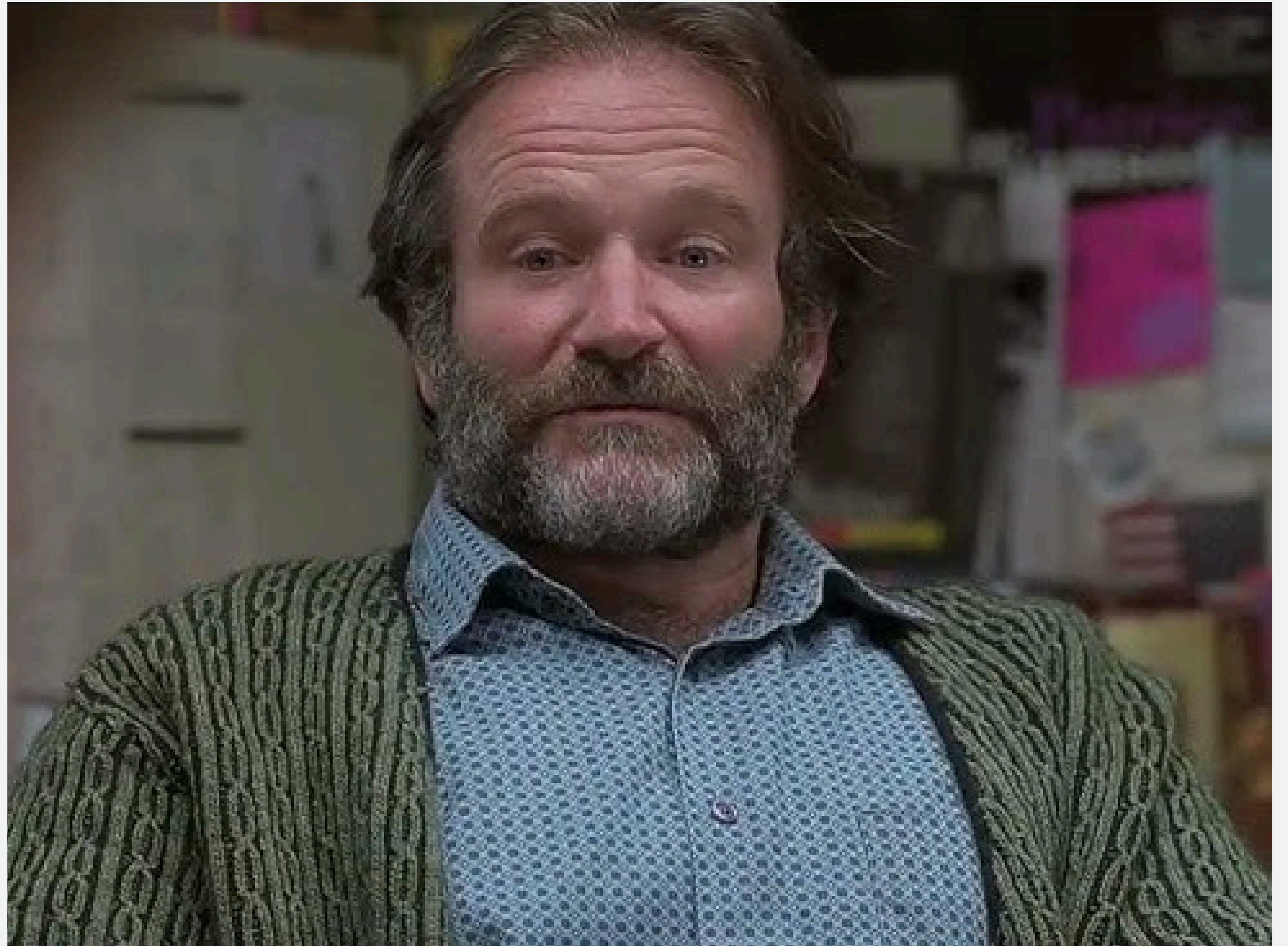


BELLA

Bella is the “beauty” to Owen’s “beast”, representing an idealized version of love and intimacy that has always been out of his reach. She becomes the object of his distorted obsession, trapped in a nightmare where she must navigate his delusional attempts to make her his.

DR. WILLSON

Dr. Willson is a compassionate but determined therapist, working tirelessly to help Owen regain his grasp on reality, carefully navigating the minefield of Owen's fractured mind in hopes of pulling him back from the brink of delusion.



DIFFERENTIATORS

Horror/Thriller Is The Most Profitable Genre

Cast and Crew Ownership

Effective Shooting Costs

Largely Single Location Setting

20+ Years In Indie/DIY Filmmaking

Well Established Relationships With Actors and Crew

HORROR

Horror is highly profitable due to its low production costs and high return potential. Unlike other genres, horror relies on atmosphere and suspense over expensive sets or big-name actors, keeping budgets lean. Fear also transcends cultural barriers, making horror films marketable worldwide. Hits like Paranormal Activity and more recently the Terrifier franchise, prove that low-budget horror can achieve massive box office success, making it an attractive choice for investors.

THE GROTESQUE



BUDGET - \$15,000
BOX OFFICE - \$194M



BUDGET - 2.5M
BOX OFFICE - \$40M



BUDGET - LESS THAN \$10M
BOX OFFICE - \$194M

**SUPER
MEGA
ULTRA**

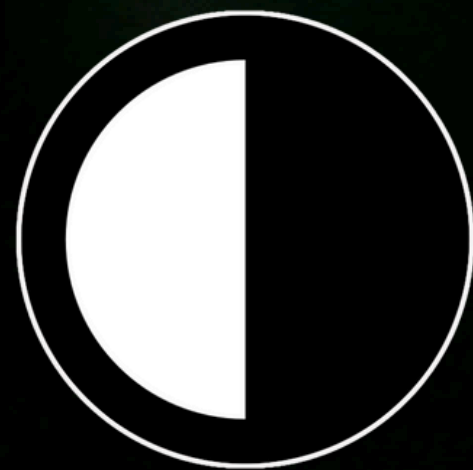
FINANCING

We are raising \$20,000.

Financiers will receive their original investment plus 25%

After \$30,000 is paid out, the waterfall is as follows:

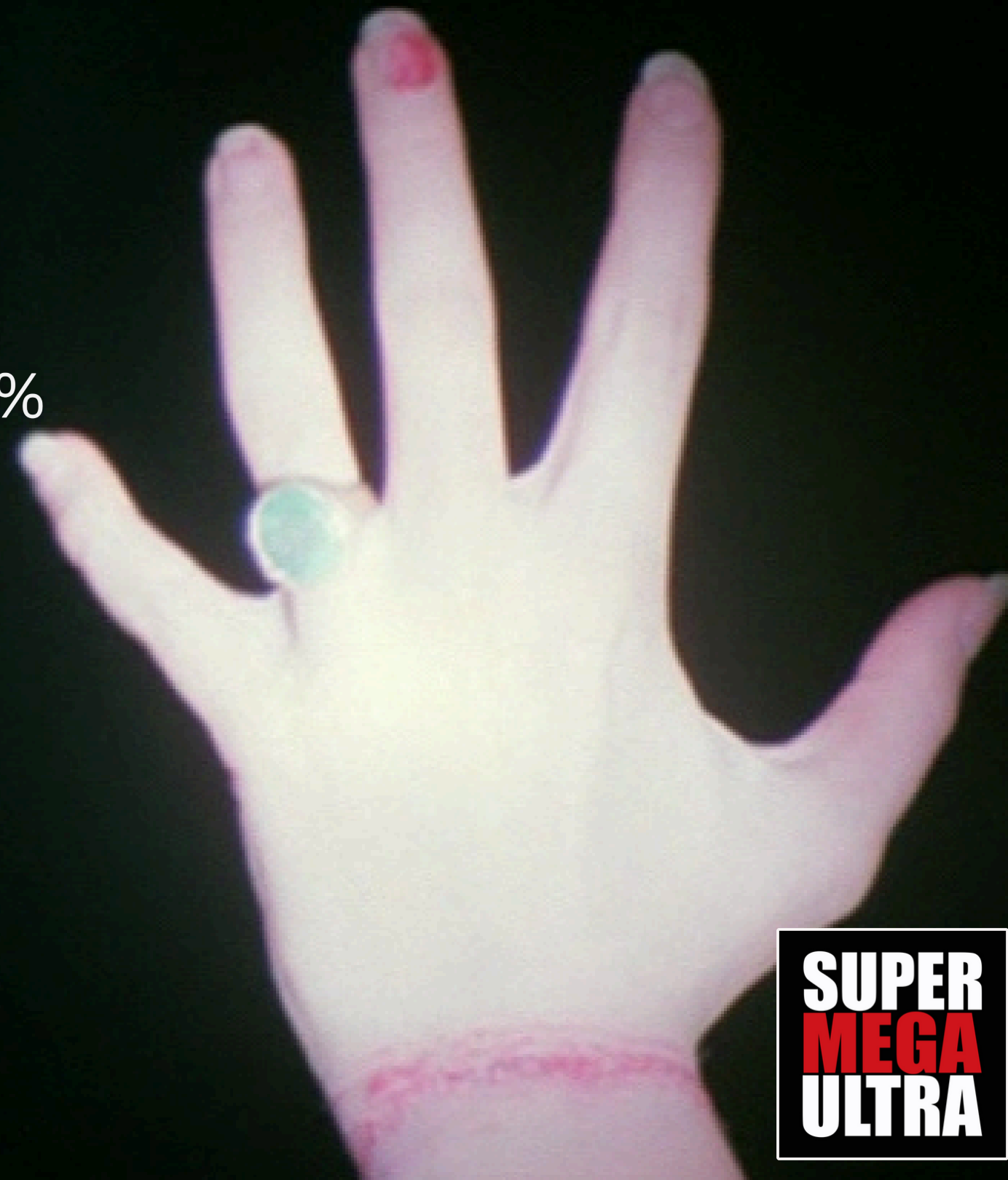
50% for
Investors



50% for
Producers/Crew

THE GROTESQUE

SUPER
MEGA
ULTRA



INVESTMENTS

Presents - \$20K

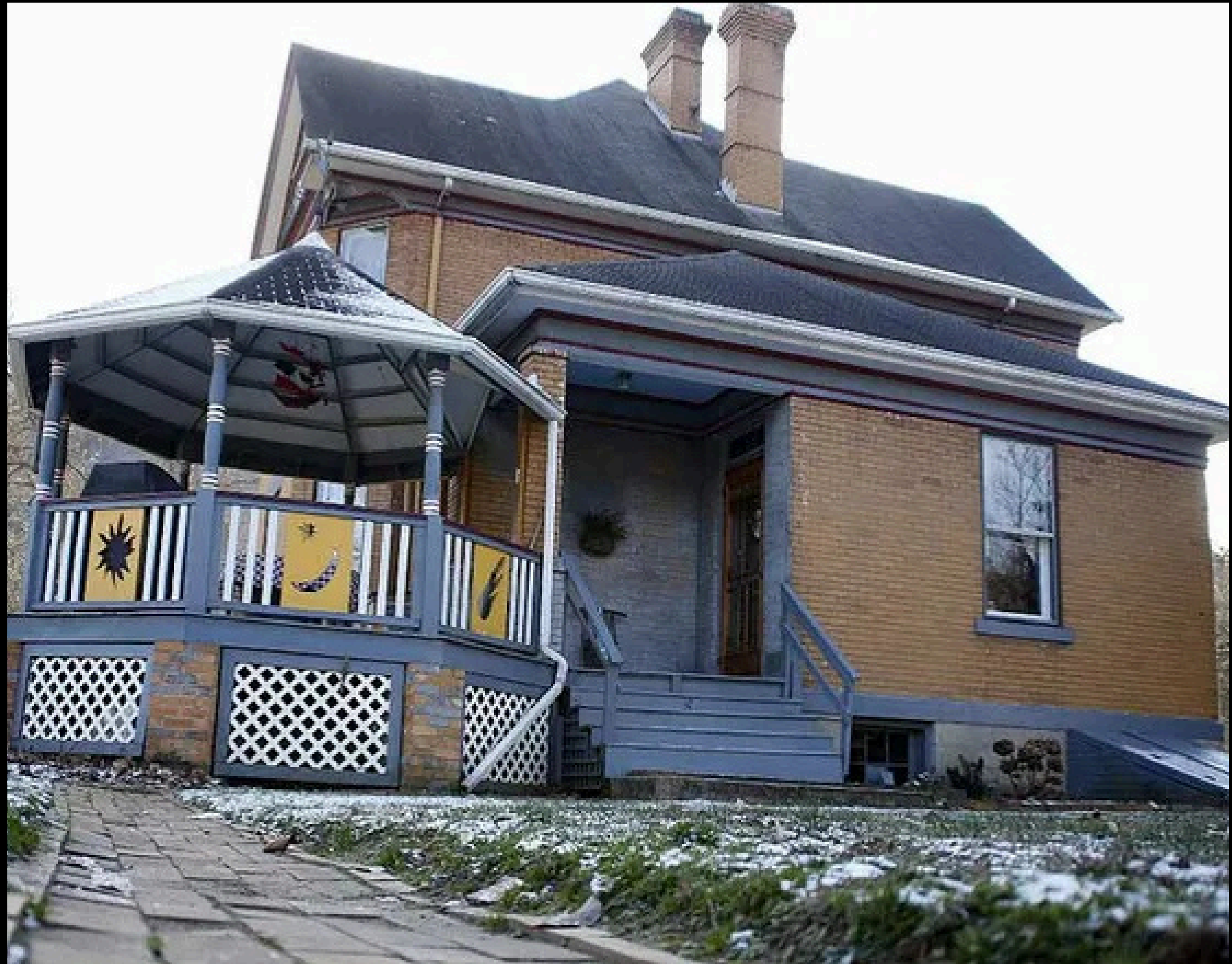
Executive Producer - \$5K

(include extra crew equity, festival invites, premiere, opening credit, name on poster)

Minimum - \$400

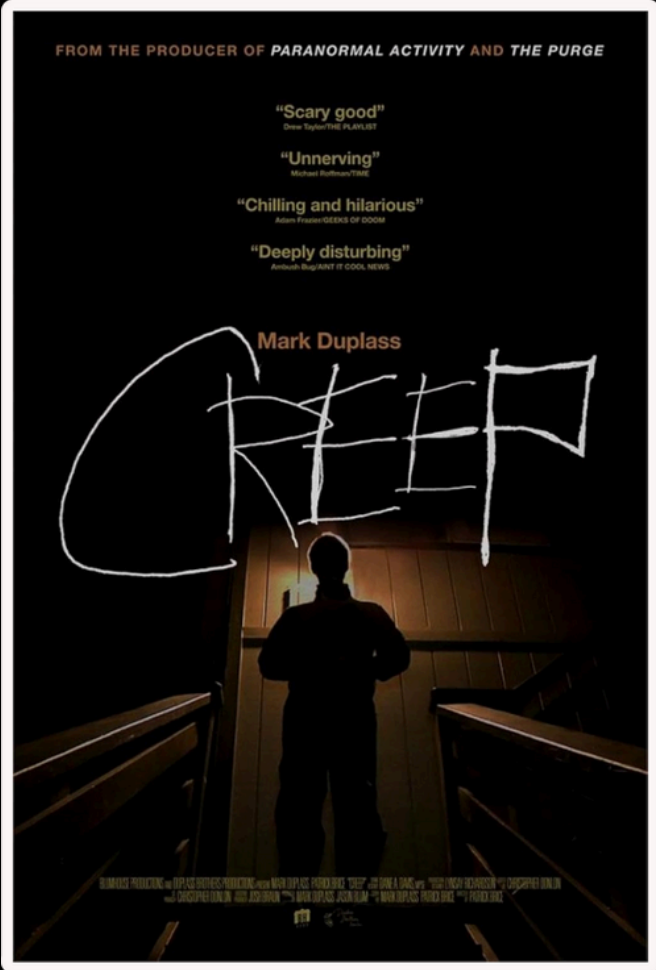
Perks/Benefits

- Producer credit on a motion picture!
- Be an extra in the movie
- Set visits, wrap party, meet actors
- Exclusive sneak peaks at the early/various cuts of the work in progress.



COMPARISONS

*AS OF 2024



BUDGET - \$5,000
BOX OFFICE - \$7.4M



BUDGET - \$15,000
BOX OFFICE - \$2,000,000.00



BUDGET - \$50,000
BOX OFFICE - \$139,745

THE GROTESQUE

SUPER
MEGA
ULTRA

DISTRIBUTION

There are numerous distribution options and while theatrical is the “holy grail” for those lucky indie films that get picked up, the producers also have many different streaming and disc distribution possibilities as well as a fall back plan to self-distribute through a DIY platform like MojoMakers or FilmHub.

THEATRICAL



STREAMING



VOD



AVOD



TIMELINE TO DATE

JUNE 2024 - MARCH 2025

FINANCING, SCRIPT DEVELOPMENT, LOCATION SCOUTING

APRIL 2025

PRODUCTION SLATED

MAY 2025 - DECEMBER 2025

POST PRODUCTION

JANUARY 2026

FESTIVAL SUBMISSIONS

THE GROTESQUE

**SUPER
MEGA
ULTRA**

PLEASE JOIN US AND INVEST IN

The
Grotesque

THE GROTESQUE

SUPER
MEGA
ULTRA